

## TWIN ROCKS SPRING

The Twin Rocks Spring location includes several groups located on the north side of Sugar Camp Run directly across from the old North Fork Park area and extending eastward approximately 200 yards along the hillside. The spring is a small cistern box that sits just below rock Prosperity Rock (#70). It is known for a continuous supply of clear clean water. The spring was used by a number of families who maintained summer cottages within North Fork Park between 1901 and 1911. The cottages were abandoned after the bridge along the access road was washed out during a flood in 1911.1



## TWIN ROCKS SPRING

---

### Rock 65 (Dedicated)

Panel 1

GAL. 2:20  
5:24; 6:14

#### **CRUCI FYING**

(Note: CRUCI FYING is in the shape  
of a cross)

Panel 2

ROM. 6:6

GPS N 41 11 257  
GPS W 79 04 400



### Rock 66 (Dedicated)

Panel 1

#### **BEARING**

EZEK 4:4-6

GPS N 41 11 257  
GPS W 79 04 400



### Rock 67 (Dedicated)

Panel 1

#### **ENLARGEMENT**

GPS N 41 11 289  
GPS W 79 04 293



### Rock 68 (Dedicated)

Panel 1

JESUS \* CAST  
OUT ALL THEM THAT  
SOLD AND BOUGHT IN THE  
TEMPLE. MAT. 21:12-13; JNO. 2:13-17

#### **LIGHT**

JOHN 3:19

GPS N 41 11 274  
GPS W 79 04 294



**Rock 69** (Dedicated)

Panel 1

**HEART MAT. 4:6 TURNING**

THE BATTLE IS NOT YOURS, BUT GOD'S

II CHR. 20:1-30

HIS PLACE OF DEFENSE SHALL BE THE MUNITIONS OF ROCKS.

BREAD SHALL BE GIVEN HIM.

ISA. 33:10-17; 28:14-22

HE \* HAD A BOW; AND A CROWN

WAS GIVEN HIM: AND HE WENT FORTH

CONQUERING, AND TO CONQUER.

GPS N 41 11 272

GPS W 79 04 295



---

**Rock 70** (Dedicated)

Panel 1

**PROSPERITY**

BELIEVE HIS PROPHETS,

SO SHALL YE PROSPER

Panel 2

DO NOT YE JUDGE THEM THAT ARE WITHIN?

PURGE OUT THEREFORE THE OLD HEAVEN

THAT YE MAY BE A NEW (PURE) LUMP

IF HE HEAR THEM NOT, TELL IT UNTO THE CHURCH.

I COR. 5:7-12; MAT. 18:15-17

[ANYBODY WHICH DOEW NOT JUDGE ITS

MEMBERS IS NOT A SCRIPTURAL CHURCH

AND CANNOT STAND BEFORE GOD.

LEAVE A SINKING SHIP BEFORE

YOU SINK WITH IT

Panel3

PROVE ALL THINGS: HOLD FAST THAT

WHICH IS GOOD. I THESS. 5:21

[PROVE THIS ROCK PLAN, AND ITS SPONSOR

BY A FAIR AND THOROUGH SCRIPTURAL TEST.

[PROVE ALL PREACHERS, CHURCHES, SUNDAY  
SCHOOLS, AND THEIR MEMBERS, IN THE SAME WAY.]

PROVE YOUR OWN SELVES. II CHOR. 13:5

WITH WHAT JUDGEMENT YE JUDGE YE SHALL BE JUDGED.

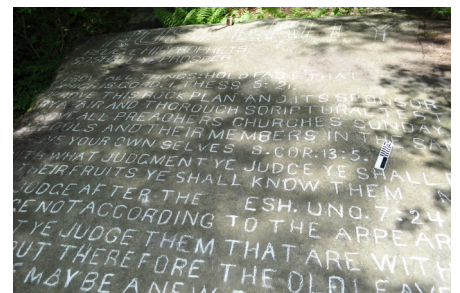
BY THEIR FRUITS YE SHALL KNOW THEM. MATT. 7:2:20

YE JUDGE AFTER THE FLESH. JNO. 7:24; 8:15

JUDGE NOT ACCORDING TO THE APPEARANCE

GPS N 41 11 269

GPS W 79 04 296



**Rock 71**

Panel 1

ELMER E. BOOSE  
1913 LANC.  
PA

GPS N 41 11 269  
GPS W 79 04 296

*(Note: Graffiti but approximately the same time as Stahlman was engraving. Elmer Boose was a minor league baseball player from Lancaster, Pennsylvania. In 1913, he played for a team based in Brookville.)*



**Rock 72** (Dedicated)

Panel 1

**SUPPLICATION**

GPS N 41 11 257  
GPS W 79 04 289



**Rock 73** (Dedicated)

Panel 1

**PERFECTION**

CHASTISEMENT \*YEILDETH THE PEACABLE FRUITS OF  
RIGHTOUSNESS UNTO THEM WHICH ARE EXERCISED THEREBY  
THAT WE MIGHT BE PARTAKERS OF HIS HOLINESS.

HEB. 12:5-11.

AND IF YE WILL NOT FOR ALLTHIS  
HEARKEN UNTO ME BUT WALK CON  
TRARY UNTO ME: THEN I WILL WALK  
CONTRARY TO YOU IN FURY LEV.26:14-29

GPS N 41 11 261  
GPS W 79 04 292



**Rock 74** (Dedicated)

Panel 1

**TURNING**

GPS N 41 11 294  
GPS W 79 04 292



**Rock 75** (Dedicated)

Panel 1

**RECONCILIATION**

*GPS N 41 11 291*  
*GPS W 79 04 288*



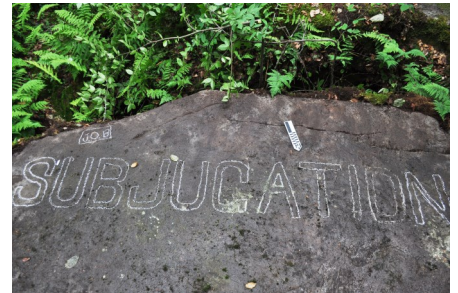
---

**Rock 76** (Dedicated)

Panel 1

**SUBJUGATION**

*GPS N 41 11 255*  
*GPS W 79 04 299*



---

**Rock 77** (Dedicated)

Panel 1

**ISRAEL'S**

Panel 2

FREELY YE HAVE RECEIVED, FREELY  
GIVE. MAT. 10:8-10; LUKE 6:38; 8:3  
THE WORKMAN IS WORTHY  
OF HIS MEAT –  
-AND MANY OTHERS, MINISTERED  
UNTO HIM OF THEIR SUBSTANCE  
GIVE AND IT  
SHALL BE GIVEN UNTO YOU/  
HE WHICH SOWETH SPARINGLY  
SHALL REAP ALSO SPARINGLY.  
GOD LOVETH A CHEERFUL GIVER.

*GPS N 41 11 254*  
*GPS W 79 04 312*



---

**Rock 78** (Dedicated)

Panel 1

**LIFE**

*GPS N 41 11 262*  
*GPS W 79 04 296*



**Rock 79** (Dedicated)

Panel 1

**REMOVAL**

*GPS N 41 11 265*  
*GPS W 79 04 306*



**Rock 80** (Dedicated)

Panel 1

WAIT ON THY GOD CONTINUALLY

**MOSES'**

WHEN MOSES HELD UP HIS HAND, ISRAEL PREVAILED

Panel 2

I WILL INSTRUCT THEE  
AND TEACH THEE IN THE WAY WHICH  
THOU SHALT GO. I WILL GUIDE THEE  
WITH MINE EYE PS. 32:8

*GPS N 41 11 256*  
*GPS W 79 04 313*



**Rock 81** (Dedicated)

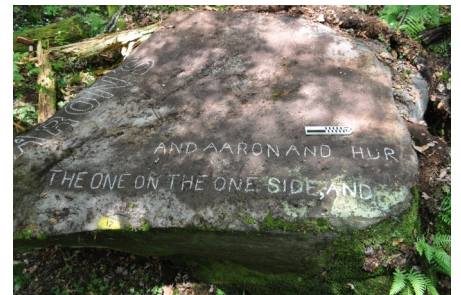
Panel 1

**AARON'S**

Panel 2

AND AARON AND HUR  
THE ONE  
ON THE ONE SIDE, AND

*GPS N 41 11 252*  
*GPS W 79 04 313*

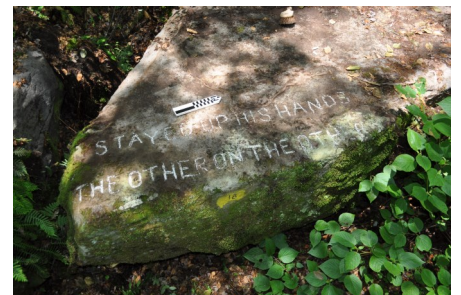


**Rock 82**

Panel 1

STAYED UP HIS HANDS  
THE OTHER ON THE OTHER

*GPS N 41 11 255*  
*GPS W 79 04 307*



**Rock 83** (Dedicated)

Panel 1

ISA. 68:22

**GUIDANCE**

*GPS N 41 11 255*  
*GPS W 79 04 311*



**Rock 84** (Dedicated)

Panel 1

**CONQUEST**

*GPS N 41 11 245*  
*GPS W 79 04 315*



**Rock 85** (Dedicated)

Panel 1

**LEVITE'S**

*GPS N 41 11 256*  
*GPS W 79 04 324*

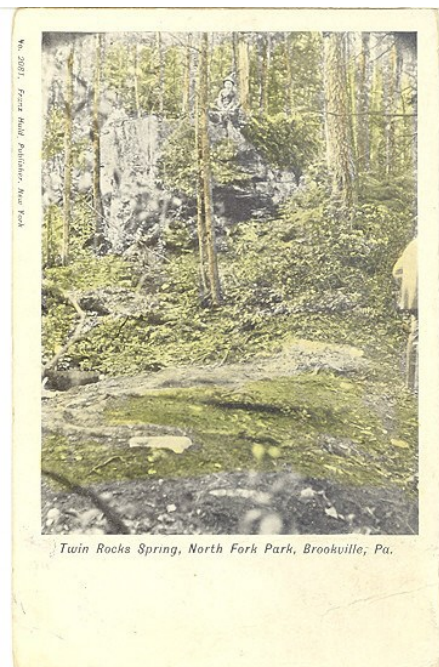


**Rock 86** (Dedicated)

Panel 1

**CHILD  
LIKENESS**

*GPS N 41 11 279*  
*GPS W 79 04 274*



Early Postcards of Twin Rocks Spring