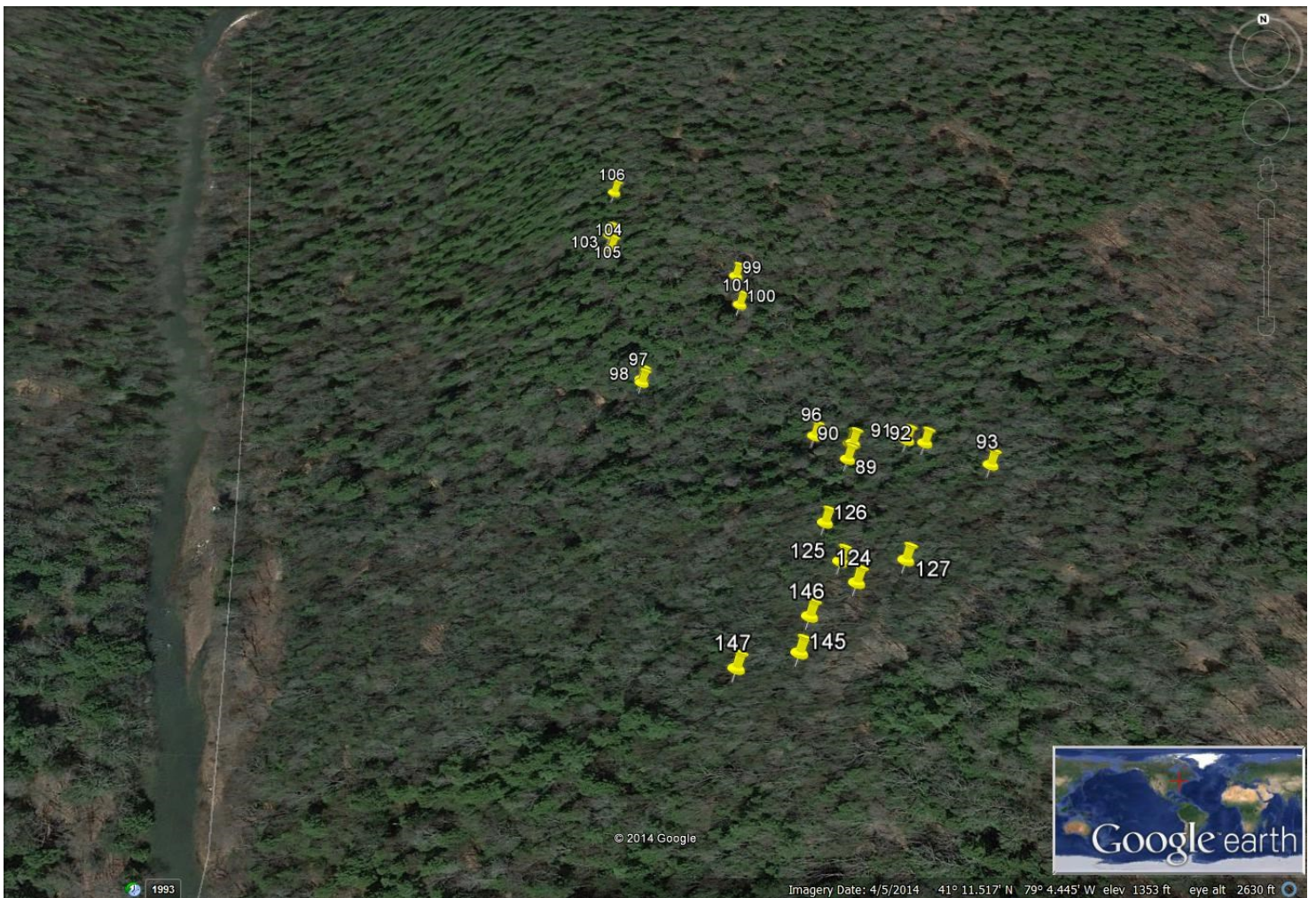


CHAPEL ROCK

The Martyrs Group including Chapel Rock is located across the ford and north along the slope above North Fork Park just east of a small, unnamed tributary flowing into North Fork Creek. Directly upslope near the sandstone outcrop line is the Overcomers group which is randomly scattered on both the slope and on the face of the outcrop. Across the unnamed tributary on the bench just above the 1400 ft elevation is the Prevailing Group consisting of ten rocks in a closely packed area. First called Martyrs' Rock, while not inscribed this rock was one of Stahlman's important sites and the second location to have seating built upon it for services. Two glass plate photographs provided by William Gilbert document the precarious bleachers and Douglas in his preaching suit on top of the rock.



CHAPEL ROCK



Rock 89

(Chapel Rock - First Dedicated as Martyr's Rock, then as Chapel Rock. This rock was the location of one of Stahlman's open air chapels. No inscriptions were found on this rock.)

*GPS N 41 11 499
GPS W 79 04 387*



Rock 90 *(Dedicated)*

Panel 1

**ILLU-
MINATION**

*GPS N 41 11 504
GPS W 79 04 384*

Rock 91 *(Dedicated)*

Panel 1

CLEANSING

*GPS N 41 11 501
GPS W 79 04 368*



Rock 92 *(Dedicated)*

Panel 1

MIRACLE
JOHN 3:19

*GPS N 41 11 499
GPS W 79 04 363*



Rock 93 (Dedicated)

Panel 1

ANGEL

GPS N 41 11 488
GPS W 79 04 347



Rock 94 (Dedicated)

Panel 1

ROM. 8:2

ADOPTION

GPS N 41 11 352
GPS W 79 04 464



Rock 95 (Dedicated)

Panel 1

LOVERS

GEN 20:18

GPS N 41 11 504
GPS W 79 04 385



Rock 96 (Dedicated)

Panel 1

VICARIOUSNESS

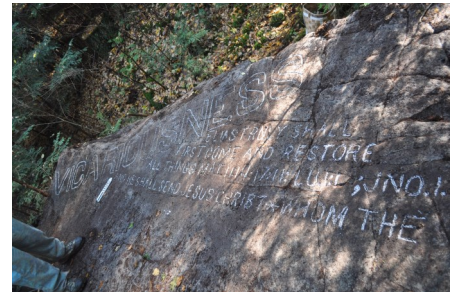
ELIAS TRULY SHALL

FIRST COME AND RESTORE

ALL THING MAT 1:14 7:14 1:1 John

1:19

GPS N 41 11 509
GPS W 79 04 395



Overcomers Group

Rock 124 (Dedicated)

Panel 1

OVERCOMERS

GPS N 41 11 459
GPS W 79 04 396



Rock 125 *(Dedicated)*

Panel 1

CUNNINGNESS

GPS N 41 11 467
GPS W 79 04 398



Rock 126 *(Dedicated)*

Panel 1

MATERIALS

GPS N 41 11 480
GPS W 79 04 399



Rock 127 *(Dedicated)*

Panel 1

BUILDING

Panel 2

TAKE HEED NOW FOR THE LORD HATH CHOSEN THEE TO BUILD AN HOUSE FOR THE SANCTUARY. BE STRONG AND DO IT.

Panel 3

THE GOD OF HEAVEN HE WILL PROSPER US, THEREFORE WE HIS SERVANTS WILL ARISE AND BUILD.

GPS N 41 11 463
GPS W 79 04 381



Rock 144 *(Dedicated)*

Panel 1

IN ALL PATIENCE

GPS N 41 11 283
GPS W 79 04 311



Rock 145 (*Dedicated*)

Panel 1

HEARKENING

GPS N 41 11 445
GPS W 79 04 415

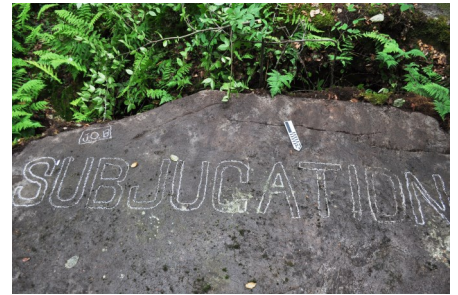


Rock 146 (*Dedicated*)

Panel 1

IRRESISTIBLE

GPS N 41 11 454
GPS W 79 04 410



Rock 147 (*Dedicated*)

Panel 1

DESTRUCTION

GPS N 41 11 445
GPS W 79 04 432



PREVAILING GROUP

Rock 97 (*Dedicated*)

Panel 1

PREVAILING

PAUL 1

GPS N 41 11 537
GPS W 79 04 449



Rock 98 (*Dedicated*)

Panel 1

DELIVERANCE

GPS N 41 11 536
GPS W 79 04 449



Rock 99 *(Dedicated)*

Panel 1

ANTI-MEDDLING

*GPS N 41 11 563
GPS W 79 04 412*



Rock 100 *(Dedicated)*

Panel 1

CONSUMING

*GPS N 41 11 554
GPS W 79 04 412*



Rock 101 *(Dedicated)*

Panel 1

BREATH

*GPS N 41 11 554
GPS W 79 04 412*



Rock 102 *(Dedicated)*

Panel 1

ANSWER

*GPS N 41 11 554
GPS W 79 04 412*



Rock 103 *(Dedicated)*

Panel 1

AUTHORITY

GEN 20:18

*GPS N 41 11 585
GPS W 79 04 456*



Rock 103 (*Dedicated*)

Panel 1

Authority

GPS N 41 11 585
GPS W 79 04 456



Rock 104 (*Dedicated*)

Panel 1

REVALATION

GPS N 41 11 580
GPS W 79 04 456



Rock 105 (*Dedicated*)

Panel 1

CAPTIVITY

GPS N 41 11 585
GPS W 79 04 456



Rock 106 (*Dedicated*)

Panel 1

TRUTH

GPS N 41 11 602
GPS W 79 04 453

